



ISSN Print: 2664-9926
 ISSN Online: 2664-9934
 Impact Factor: RJIF 5.45
 IJBS 2020; 2(2): 30-35
www.biologyjournal.net
 Received: 17-05-2020
 Accepted: 22-06-2020

Md. Hashibur Rahman
 Bangladesh Fisheries Research
 Institute, Headquarters,
 Mymensingh, Bangladesh

Mohammad Ashraf Alam
 Bangladesh Fisheries Research
 Institute, Riverine Station,
 Chandpur, Bangladesh

Flura
 Bangladesh Fisheries Research
 Institute, Riverine Station,
 Chandpur, Bangladesh

Md. Moniruzzaman
 Bangladesh Fisheries Research
 Institute, Riverine Station,
 Chandpur, Bangladesh

Md. Abu Kawser Didar
 Bangladesh Fisheries Research
 Institute, Riverine Station,
 Chandpur, Bangladesh

Corresponding Author:
Md. Hashibur Rahman
 Bangladesh Fisheries Research
 Institute, Headquarters,
 Mymensingh, Bangladesh

Nutrient retention, feed utilization, feed conversion ratio (FCR) and growth response of Tilapia (*Oreochromis niloticus*) fed with floating feed in tank based aquaculture system

Md. Hashibur Rahman, Mohammad Ashraf Alam, Flura, Md. Moniruzzaman and Md. Abu Kawser Didar

DOI: <https://doi.org/10.33545/26649926.2020.v2.i2a.50>

Abstract

An experiment was conducted to assess the utilization of feed, nutrient retention and growth response of Tilapia (*Oreochromis niloticus*) in relation to feed conversion ratio (FCR) at different stocking densities (Intensive and Semi-intensive). The study was aimed to compare the feed conversion ratio (FCR) and growth performance of tilapia at different stocking densities to have better understanding on the growth trends and subsequent outcome from the given supplement. To evaluate the nutrient retention, feed conversion ratio and affiliated growth response, the study was conducted in six concrete tanks under an outdoor laboratory shed from May-July, 2018. Each treatment consists of three replications and supplied the supplementary feed at the rate of 20%, 15%, and 10% of the body weight in 1st, 2nd and 3rd month, respectively. The weight gains of fish were 132.23±1.29 and 63.12±4.97gm for T₁ and T₂, respectively. Feed conversion ratio (FCR) in T₁ and T₂ were 2.53±0.18 and 2.13±0.20, respectively. The specific growth rates (SGR) of tilapia in T₁ was 6.26±2.28 and 4.78±3.83 for T₂, considering the data at the beginning and the end of the production cycle, respectively. Higher total production was obtained in T₁ (1119.52 g) than T₂ (830.96 g) with 100% survival in both the treatments. The present study indicates that, the FCR was comparatively higher in T₁ than T₂ but the production performance acquired higher in intensive aquaculture having significant difference in relation to semi-intensive tank-based aquaculture system.

Keywords: Nutrient retention, feed conversion ratio (FCR), growth performance, Tilapia

1. Introduction

Aquaculture is a great revolution in fisheries sectors which has introduced many effective technologies to rear fish and other aquatic animals and has contribution to escalate the total fish production worldwide. Aquaculture enterprise is very potential in terms of protein rich food production, food security and livelihood generation for the increasing number of people throughout the world especially for the developing countries like Bangladesh. Aquaculture is the fastest growing animal-based food-producing sector particularly in developing countries like Bangladesh and its production contributes to the livelihoods, employment and also meet the demand in terms of protein supply, food security and income generation of the increasing number of people throughout the world (Haque *et al.* 2016) [5]. Fish is the second most important agricultural produce in Bangladesh and today aquaculture is considered as one of the most promising resources of animal proteins and contributing a significant role in foreign exchange earnings, nutrition supply and in our national economy. Now people are getting involved in small scale aquaculture to attain more production (Subasinghe *et al.*, 2012) [12]. Tilapia is seen together of the foremost significant fish species which may reduce the gap of accelerating worldwide demand for protein sources (Romano and Ng, 2013) [10]. The contribution of fisheries sector in 2019-20 was 3.50% to the total GDP of the country and approximately 25.72% to agricultural GDP (DoF, 2020) [4]. Now-a-days, fish production shifting to aquaculture as inland fisheries production has escalated over the years, but the productivity per hectare water area is not yet attained at its optimum (DoF, 2020) [4]. Among various segments of the fisheries sub-sector, the inland aquaculture has generally

experienced the fastest growth, with the establishment of latest technologies, species, and intensification and improvement of farming, particularly in pond and tank-based aquaculture, entirely over the country. Aquaculture now provides around half the fish for direct human consumption in Bangladesh and is about to grow further. In Bangladesh, conventional semi-intensive aquaculture system is generally followed in case of fish culture besides extensive system. However, with the increasing population land area is declining in Bangladesh.

The competition between aquaculture and other agricultural sectors is increasing in the context of land and water use. Therefore, intensive aquaculture is growing to reinforce national fish production within the context of increase and declining land resource. Moreover, fish productions per unit area much higher in intensive and semi-intensive aquaculture system. To fulfill the animal protein demand for growing population in Bangladesh these culture systems may be alternative to enhance fish production since fish contributes about 60% of animal protein to our daily food (DoF, 2020) [4]. Aquaculture ponds are often integrated into conservation and management systems and tank culture are often an efficient way of overcoming the matter of water shortages. These improved methods of tank-based aquaculture system can be an efficient way to utilize scarce water resources effectively and farmers will get higher production in a small parcel of land.

Since commercial aquaculture largely depends on artificial feed and about 70% of total operational cost goes for feed, so it is very important to select right feed for expected growth (Karim *et al.*, 2017) [7]. In this experiment, the stocking density was adjusted to 320 fish/decimal and 160 fishes/decimal in intensive and semi-intensive system to achieve the expected result more accurately. To evaluate the growth of fish at different stage in relation to feed supplement, this study is likely to be effective to develop a relationship between feed and stocking density having direct effect on growth, maintenance and survival of fish. The study was carried out to in intensive and semi-intensive aquaculture system in tanks feeding with floating feed to assess the feed conversion ratio and production performance of tilapia in different sampling stages to have better understanding on the FCR in relation to supplied feed.

2. Materials and Method

2.1 Experimental site

Twelve concrete made squared shaped tanks under a properly constructed shed were established in the backyard (south of the wet laboratory complex) of the Faculty of Fisheries, Bangladesh Agricultural University (BAU), Mymensingh. Water supply and exchange facility was also satisfactory there. Each tank is of length 1m, width 1m and depth 1.2 m and water volume in each tank was 1 X 1 X 1 =1m³. Among the twelve tanks, six tanks were used to study the growth and subsequent production in relation to FCR in intensive rearing and remaining six tanks were used for semi-intensive culture of fish. The study was carried out from May-July, 2018 Tilapia was fed with floating feed to have better understating on the FCR and growth performance in different stocking density.

2.2 Experimental tanks

For conducting the experiment, twelve concrete tanks were used. The bottom of the tank was made smooth and coated

with white cement to make the bottom visible and facilitate the cleaning process easily. The outlet pipes of the tanks were closed to prevent water leakage. Siphoning process was followed to clean the tanks. Water was supplied from a deep tube well located near the experiment site.

2.3 Experimental design and layout

Monosex male tilapia (*O. niloticus*) fry was used as experimental species. For the experiment, two treatments were designed namely T₁ and T₂ and there were three replications for each. Fry was released at the rate of 8 fry/tank that equivalent to the stocking density of 320 fish per decimal or about 80,000 per hectare in intensive and 4 fry/tank that equivalent to the stocking density of 160 fish per decimal in semi-intensive aquaculture system.

2.4 Selection of feed and feeding frequency

Floating types of commercial pellet feed named as 'Quality Feed' were used. The proximate composition of feed is shown in Table-1. In first 30 days of the experiment, the size of floating feed used for feeding the fish was 0.25 mm. Then the pellets of 0.5 mm were used to feed the fish during the rest experimental period. During experimental period feed was given at the rate of 20%, 15%, and 10% of the body weight in 1st, 2nd and 3rd month, respectively.

Table 1: Proximate composition of sinking and floating feed as per labeling on the feed bag

Proximate composition	Floating feed (%)
Moisture	10
Protein	28
Fat	6
Starch	22
Fiber	3
Ash	12
Calcium	2
Phosphorus	1

2.5 Aeration Installation

Air stone aerators were applied to provide sufficient oxygen powered by electricity. A single air stone was allocated for each tank. The aerator motors were attached with the main structure of the roof of the shed. The aeration was operated for 24 hours during the experimental period.

2.6 Study of growth parameters of fish

$$\text{Feed conversion ratio (FCR)} = \frac{\text{Weight of fish (gm) (dry weight basis)}}{\text{Live weight gain(gm)}} \times 100$$

$$\text{Weight gain (gm)} = \text{Mean final weight (gm)} - \text{Mean initial weight (gm)}$$

$$\text{Percent (\%)} \text{ weight gain} = \frac{\text{Mean final weight} - \text{Mean initial weight (gm)}}{\text{Mean initial weight (gm)}} \times 100$$

$$\text{SGR (\%)} \text{ per day} = \frac{\log W_2 - \log W_1}{T_2 - T_1} \times 100$$

$$\text{Nutrient (\%)} \text{ retention} = \frac{\text{Final Carcass Composition} - \text{Initial carcass composition}}{\text{Amount of nutrient feed}} \times 100$$

Production = No. of fishes harvested × average final weight increase of fishes.

2.7 Water quality parameters

Water quality parameters (i.e., temperature, DO, pH) of the experimental tanks were recorded very intensively two times daily. Different physio-chemical parameters were measured using digital DO meter (Model: CE 225908) in mg/l. Water temperature was measured by using digital thermometer in °C and pH was recorded by digital pH meter.

2.8 Data analysis

Statistical analysis was done to evaluate the effect of the two treatments on the growth of fish were significant or not. Independent sample T-Test was performed to test the significance of difference among different water quality parameters. The entire statistical test was conducted by using SPSS (Statistical Package for Social science). The graph was prepared by using both MS Excel and SPSS.

3. Results

3.1 Fish Growth performance

3.1.1 Final weight: The final mean weight of each fish was for T₁ 139.94±1.29 and 69.24±4.97 g for T₂ where the initial weight of individual tilapia was 7.71±0.19g and 1.12±0.18 g for T₁ and T₂, respectively with having significant difference (p<0.05) between the treatments.

3.1.2 Weight gain

The difference in weight gain is notably remarkable between two treatments. The average weight gain of tilapia for T₁ was 132.23±1.29 g and for T₂ was 63.12±4.97 g, respectively. The weight gain of tilapia was higher in T₁ than T₂. This frequent observation was performed to find out where the maximum growth was taken place in the production cycle of two different feeding systems. In term of weight gain, in the most sampling stages, the performance in T₁ was significantly (p<0.05) higher than T₂.

3.1.4 Specific growth rate (SGR % per day)

The fishes were sampled at 3 days interval to gain the weight of fish to determine the actual growth performance at particular sampling stages. The specific growth rates (SGR) of tilapia in T₁ and T₂ were found 6.26 ±3.83 and 4.98±2.28, respectively. There was significant difference (p>0.05) in term of SGR between the treatments. In this regard, in first month of the production cycle the growth of T₁ was higher than that of T₂. The SGR of T₁ was shown increasing gradually. After that, at the last sampling stage, average trend of SGR was observed (Table-2 and Fig-1). More specifically, the significant higher specific growth rates were observed at the middle stage (In between 4th June and 11th June) of the experiment and also in later stages in case of floating feed fed tilapia (Table-2 and Fig-2).

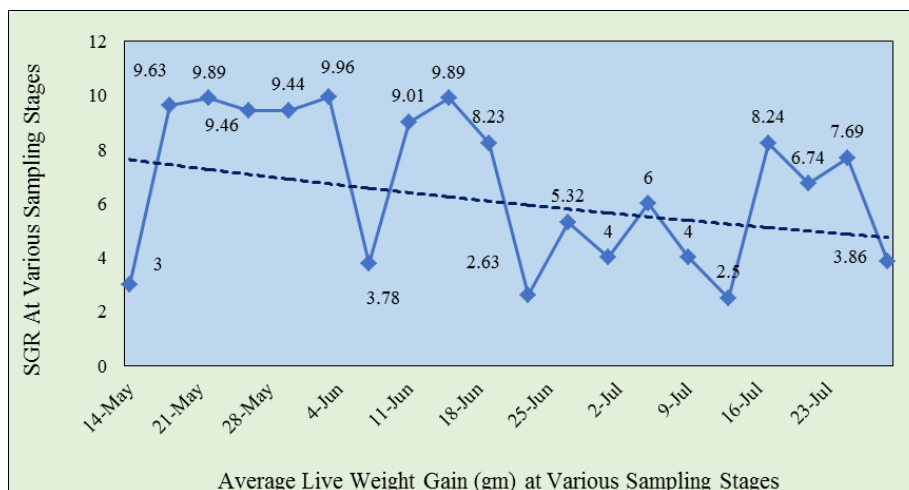


Fig 1: Specific growth rate of tilapia in intensive culture system (T₁).

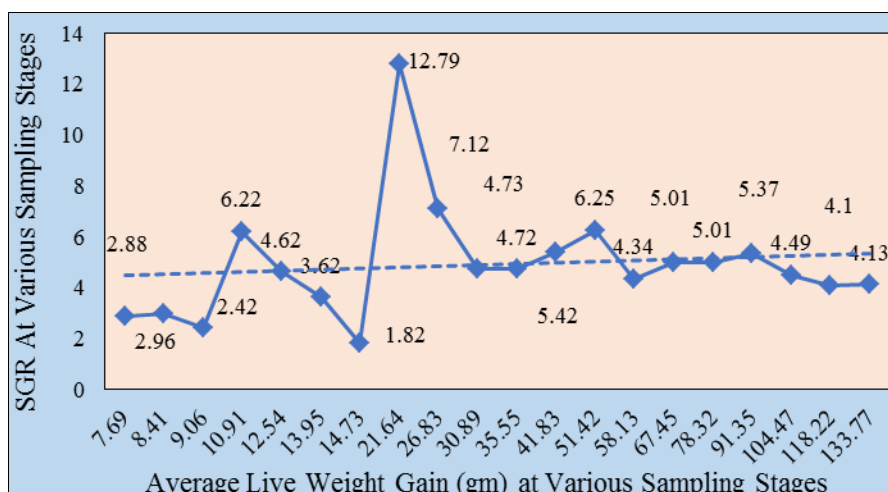


Fig 2: Specific growth rate of tilapia in semi-intensive culture system (T₂).

Table 2: Specific growth rate (SGR) at 3 days interval

Sampling No.	Sampling day/stage	Average SGR in Treatment 1 (Mean ±SD)	Average SGR in Treatment 2 (Mean ±SD)
01	14 May	3.00±0.562	15.43±5.26
02	18 May	3.63±1.204	13.13±7.90
03	22 May	3.89±2.784	6.65±7.25
04	26 May	8.46±2.099	9.42±9.80
05	30 May	5.44±0.479	7.33±4.40
06	03 Jun	3.96±1.335	5.82±2.44
07	07 Jun	3.78±1.781	5.87±0.61
08	11 Jun	9.01±3.120	15.02±1.62
09	15 Jun	5.89±2.173	4.05±3.05
10	19 Jun	4.63±0.297	8.23±1.88
11	23 Jun	5.32±1.109	5.25±1.41
12	27 Jun	5.66±0.706	5.18±2.27
13	01 July	5.76±5.729	5.18±3.62
14	05 July	4.97±1.786	6.20±2.99
15	09 July	6.23±1.299	2.53±1.57
16	13 July	5.52±1.251	2.53±1.18
17	17 July	4.24±0.667	2.38±0.92
18	21 July, 17	3.74±1.623	2.68±0.78
19	25 July, 17	3.69±0.610	2.07±1.40
20	29 July, 17	2.86±0.595	2.34±1.60

The SGR at the initial stage started from the higher range in T₁ compared to T₂ (Figure-1 and Figure-2)

3.1.5 Feed conversion ratio (FCR)

The feed conversion ratio was calculated taking the total feed used into consideration in the experiment. Feed conversion ratio values of sinking and floating feed used for feeding the fish in T₁ and T₂, respectively were 2.43±0.18 and 2.13±0.20 (Fig-3).

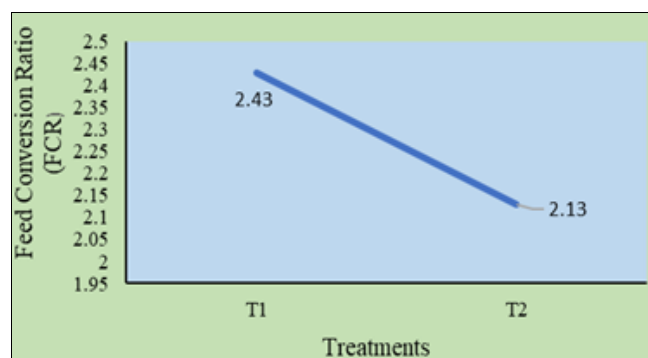


Fig 3: Feed conversion ratio in T₁ and T₂

3.1.6 Total production (g/m³)

The total productions of tilapia at the end of the study were 1119.52±0.00g and 830.96 g ±0.00 g per cm³ in T₁ and T₂, respectively. The production was higher in the T₁ than that of T₂ (Fig-4).

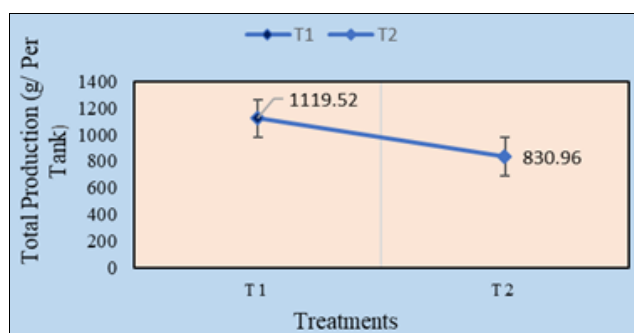


Fig 4: Total production of tilapia in the two treatments (T₁ and T₂)

3.1.7 Nutrient Retention

The retention of the nutrient after the 90 days of the experiment, the use floating feed in both the treatments (T₁ and T₂) does not affect the nutritional composition of *O. niloticus*. The protein efficiency ratio did not differ significantly (*p*<0.05). The nutrient retention has been shown in (Table-3 and Fig-5).

Table 3: The nutrient retention

Proximate composition (%)	Initial carcass composition	Nutrient retention (%) in T ₁	Nutrient retention (%) in T ₂
Moisture	70.32±0.56	0.26	0.23
Protein	62.54±1.54	0.28	0.26
Lipid	15.89±0.45	11.57	11.25
Ash	11.97±0.85	2.42	2.29

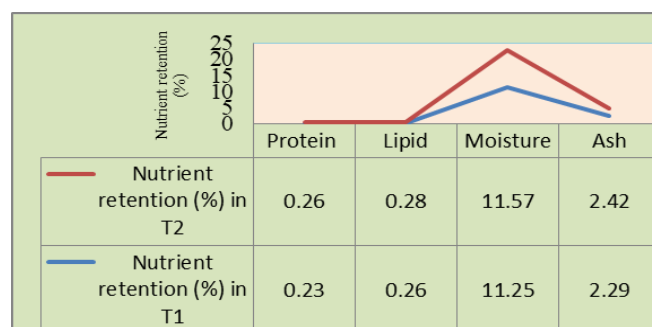


Fig 5: Nutrient retention in both the treatments ((T₁ and T₂))

3.1.8 Water quality parameters

The mean values of tested water quality parameters such as temperature and DO of the experimental ponds are presented in Table-3. There was no significant difference (*p*<0.05) in the temperature in morning and evening in both treatments. The difference of dissolved oxygen content was very low between two treatments. The dissolved oxygen contents in both treatments were similar because aerators were installed in all the tanks (Table-4).

Table 4: Water temperature of experimental tanks

Water quality parameters	Intensive			Semi-intensive		
	Treatments	Morning	Evening	Treatments	Morning	Evening
Temperature (^o C)	T ₁	27.31±1.45	27.41±1.57	T ₂	26.98±1.59	27.13±1.67
DO (mg/l)	T ₁	6.76±0.83	6.57±0.79	T ₂	6.91±0.81	6.64±0.82

4. Discussion

The mean initial weight of the tilapia in the 6 tanks of T₁ was 7.71±0.19g and in the other 6 tanks of T₂ was 1.12±0.18 g. At the end of the experiment, the mean weight of the fish in T₁ was 139.94±1.29 and 69.24 in T₂. The weight gain was higher in T₁ which might be due to the fact that fish had taken more amount of feed than almost similar level of water quality (Alam, 2009) [1].

Feed conversion ratio (FCR) was calculated to evaluate the utilization of feed that was given to the fish. The expected FCR for tilapia ranges from 1.5 to 2.0 (Watanabe *et al.*, 2002) [13]. The FCRs of tilapia in present study were 2.43±0.18 and 2.13±0.20 in T₁ and T₂, respectively. The FCR in T₂ was within expected range but in case of T₁, it was higher than the accepted value (figure-3). In this experiment, feed was given following general method of body weight percentage consideration, not considering the satiation level. For this, the supplied feed might remain unused. That is why the feed conversion ratio (FCR) of T₁ was higher than expected level as the total amount of delivered feed was taken into consideration during calculating the FCR.

In this experiment. The mean value of SGR in T₁ and T₂ were 6.26 ±3.83 and 4.98±2.28, respectively. From these data, the specific growth rate of tilapia in T₁ was higher than in T₂ in first 30 days (around) and in the middle stage both SGR increased simultaneously. Growth rate and production performance of tilapia in tank-based aquaculture system in relation to FCR was the main fact of interest of the present study. The SGR of tilapia in T₁ was initially lower than T₂ and the value decreased with the culture period in a regular fashion. The lowest value of SGR in T₁ was recorded in between 4th and 11th June and at the end of the experiment the trend line of SGR was observed about to elevate (Table-2). On the other hand, the value of SGR in T₂ was higher at the first stages of the growth than T₁. Then it was decreasing in trend and started falling rapidly from the 3rd sampling stage. The trend line of both SGR was also in downward direction at the end of the experiment. It might be due to that after particular stages of weight gain, the fish did not like to take floating feed from the surface layer of water by expending energy rather preferred sinking feed from the bottom.

Hussain *et al.* (1987) [6] recorded survival rate of tilapia ranged from 82 to 90%. The survivability of tilapia in the present study was 100%. In this study, the highest survivability might be the cumulative result of good water quality parameters due to weekly water exchange, quality feed uses and proper maintenance during culture. This result of 100% survival in both the treatments confirms that indoor tank-based aquaculture systems can be developed in Bangladesh where land is getting scarce natural resource.

The mean total production per cm³ was 1119.52±0.00g and 830.96 g ±0.00 g in T₁ and T₂, respectively. The production was higher in T₁ than T₂. Rana (2014) [9] recorded the production of tilapia (*O. niloticus*) at the rate of 28MT/ha/100 days in pond. In the present study, the

production was lower than the finding of Rana (2014) [9] if the culture area of tank were corresponded to hectare. The fact of lower production might that the fish were sampled at frequently at 3 days interval that causes little disturbance in taking feed that may affect the growth of tilapia.

Battes *et al.* (1979) [3] reported that water temperature plays a vital role in regulating the metabolic process of fish. The suitable range of tilapia culture is 26 to 32 °C (Khan *et al.*, 2008) [8]. Therefore, it is very important to maintain the temperature of the culture unit. The water temperature of the experimental tanks was within the suitable range of tilapia culture.

The growth and survival process of fish may be disrupting due to the unusual fluctuation of dissolved oxygen concentration. It is an important water quality parameter that affects the normal physiological state. Low dissolved oxygen content is lethal to fish & reduction in dissolved oxygen content has negative effects on growth, reproduction and other biological activities of fish. Balarin and Hatton (1979) [2] reported that tilapia can tolerate dissolved oxygen concentration as low as 0.1 mg/l.. In the present study, the mean average oxygen content of T₁ was 6.57±0.79 and 6.64±0.82 during morning and evening, respectively. Higher level of dissolved oxygen concentration was recorded in the experimental tanks as a result of aerator installation.

The present study aimed to reveal the growth performance of fish in relation to FCR and production performance in accordance with the different stocking densities to have better understanding on the growth trends at various sampling stages. This finding may be helpful to the fish farmers to assemble an immense information on the suitable culture technology specially for producing fish tank-based aquaculture system at different stocking densities.

5. Conclusion

The total production was enhanced and found a promising growth performance with the increase of stocking density. This study suggests that tank-based aquaculture can be developed in the indoor system that can ensure 100% survival. This study also had an introspective observation for to detect the redundant amount of feed supply in the farmer's level. Due to lack of proper knowledge on specific growth rate at different stages of fish growth and production an inefficient feeding practices wasting high-cost floating feed. This study reveals an outstanding clarification on the growth performance of fish in different sampling stages in relation to supplied feed at various stages of fish growth and thus the wastage of feed at the final stages of the culture period can be retarded due to the proper demonstration of feed to reduce the FCR. From the experiment, it might be suggested that the higher stocking density performed better in comparison with the semi-intensive aquaculture system in tank-based aquaculture. It is possible to produce a higher number of fish in such an improved way from a small parcel of land. However, further study needed to explore the relative cost effectiveness of the culture of tilapia fish in higher stocking density in tank-based aquaculture system.

6. References

1. Alam MN. Effect of stocking density on the growth and survival of Mono-sex Tilapia (*Oreochromis niloticus*) fry (GIFT strain) in hapa. MS Thesis. Department of Aquaculture, BAU, Mymensingh; c2009. p. 42.
2. Balarin JD, Hatton JP. Tilapia: A guide to Their Biology and Culture in Africa. Unit of Aquatic Pathology, University of Stirling, Scotland; c1979. p. 174.
3. Battes K, Constania L, Valencive N, Lordache L, Tarus T. Carp culture in floating cages. Bulletin of Correct piscis. 1979;1(1-2):68-95.
4. DoF. Jatio Matshya Saptaho Shankalan, Department of Fisheries, Ministry of Fisheries and Livestock, Dhaka, Bangladesh; c2020. p. 144-145.
5. Haque MM, Sultana T, Salam MA, Alam MM. Effect of aeration on growth and production of fish in intensive aquaculture system in earthen ponds. MS Thesis, Department of Aquaculture, Bangladesh Agricultural University, Mymensingh; c2016.
6. Hussain MG, Rahman MA, Akhteruzzaman M. A study on the production of *O. niloticus* (Linnaeus) under intensive system in Bangladesh. Bangladesh J Fish Res. 1987;1(2):19-23.
7. Karim M, Zafar A, Ali M. Growth and Production of Monosex Tilapia (*Oreochromis niloticus*) Under Different Feeding Frequencies in Pond Conditions. J Aquac Mar Biol. 2017;6(5):00167.
8. Khan S, Hossain MS, Hossain MM. Production and economics of GIFT strain of tilapia (*Oreochromis niloticus*) in small seasonal ponds. Progressive Agriculture. 2008;19(1):97-104.
9. Rana KMS. Development of black solidier fry larve rearing technique to supplement fish feed, MS Thesis, Department of Aquaculture, Bangladesh agricultural University, Mymensingh; c2014.
10. Romano N, WK Ng. A review of the nutrition and feeding management of farmed tilapia throughout the culture cycle. Reviews in Aquaculture. 2013;4:1-35.
11. Saha DC. Determination of suitable monoculture technique for GIFT in the Northern Region of Bangladesh, MS Thesis, Department of Fisheries Management, Bangladesh agricultural University, Mymensingh; c2004.
12. Subasinghe R, Ahmad I, Kassam L, Krishnan S, Nyandat B, Padiyar A. Protecting small-scale farmers: a reality within a globalized economy? In: RP Subasinghe, JR Arthur, DM Bartley, SSD Silva, M Halwart, N Hishamunda, CV Mohan and P Sorgeloos (Editors), Farming the Waters for People and Food. Proceedings of the Global Conference on Aquaculture 2010, Phuket, Thailand. 22–25 September 2010, FAO, Rome and NACA (Network of Aquaculture Centres in Asia - Pacific), Bangkok; c2012. p. 705-717.
13. Watanabe WO, Losordo TM, Fitzsimmons K, Hanley F: Tilapia production system in the Americas: technical advances, trends and challenges. Reviews in Fisheries Science. 2002;10(3-4):465-498.